



Main Features:-

- ◆ 1pc Design Stainless Steel Ball Valve
- ◆ Locking Device, Anti Blow Out Stem
- ◆ BSPP Female Ends - Reduced Bore
- ◆ PTFE seats and Seals
- ◆ -10C to +180C Temperature Rating PN63

*Temperature and pressure determined by valve body, seat etc.



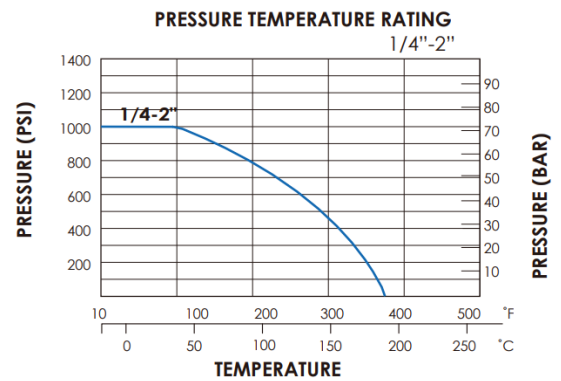
SERIES: 10103

MANUFACTURER: **AVOL**
INDUSTRIAL VALVES

Suitable Applications & Approvals:

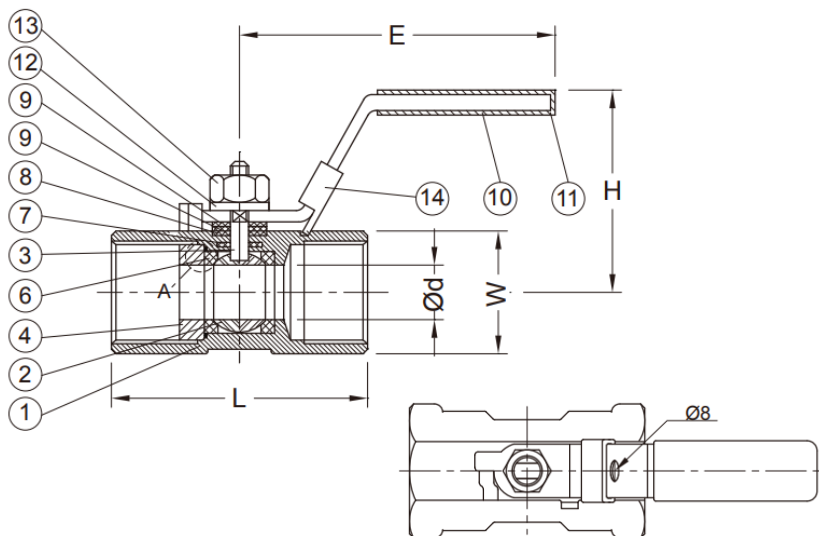


SIZE	CODE	OD	L	E	H	W	CV	KG
1/4"	10103-02	5	39	69	35	17	4	0.06
3/8"	10103-03	7.2	44	79	36	21	4	0.1
1/2"	10103-04	9.2	56.5	109	40	25	4.5	0.19
3/4"	10103-05	12.5	59	109	42	32	9	0.26
1"	10103-06	15	71	117.7	47	38	16	0.42
1 1/4"	10103-07	20	78	117.7	53	48	24	0.65
1 1/2"	10103-08	25	83	157	62	53	37	0.84
2"	10103-09	32	100	155.5	67	64	68	1.33



VALVE DIMENSIONS

DIMENSIONAL DRAWING OF VALVE



MATERIALS OF CONSTRUCTION

BODY	SS ASTM A351
BALL	SS ASTM A351
BODY SEAT	PTFE
STEM	AISI 316 SS
ORINGS	PTFE
PRESSURE	PN63
TEMP	-10 to +180C

T +44 (0)1386 552369

W www.allvalves.co.uk

E sales@allvalves.co.uk

F +44 (0)1386 554227

